

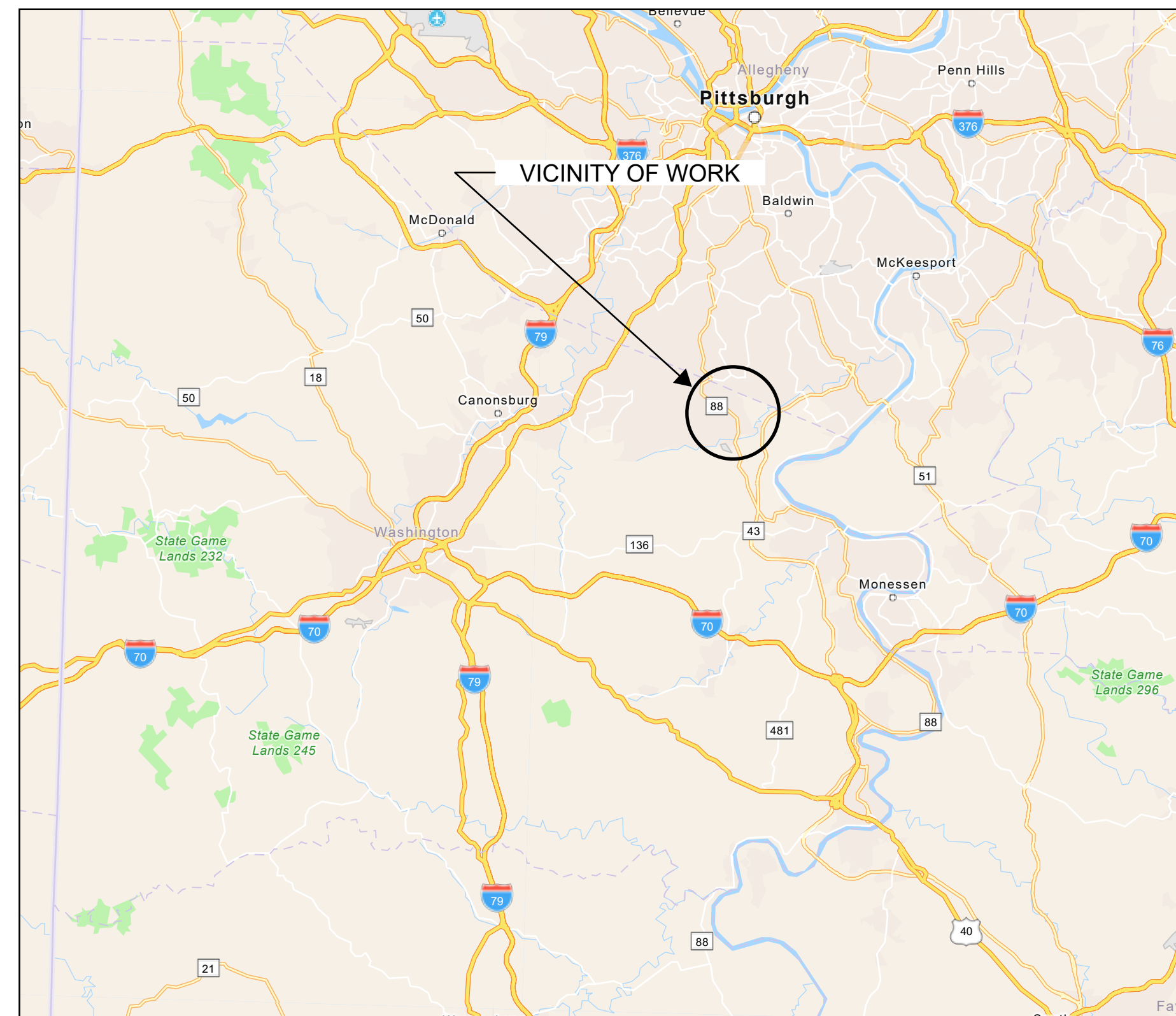
REDEVELOPMENT AUTHORITY OF WASHINGTON COUNTY ON BEHALF OF

# UNION TOWNSHIP

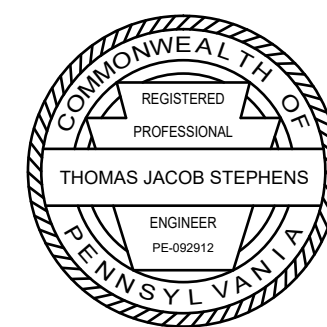
WASHINGTON COUNTY

PENNSYLVANIA

## UNION PARK IMPROVEMENTS PROJECT PROJECT NO. CD 24-18

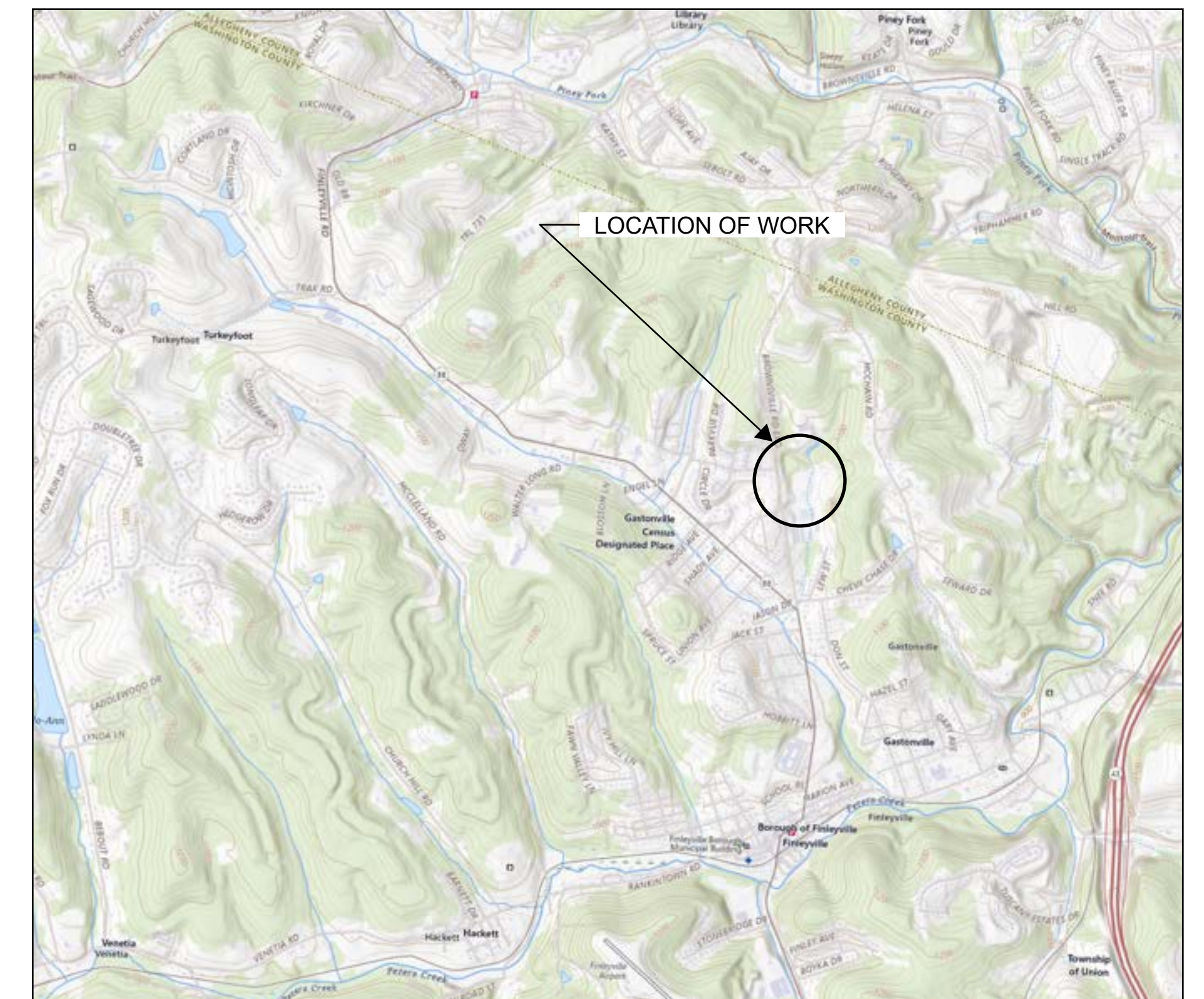


VICINITY PLAN  
0 5 10  
SCALE IN MILES



*Thomas Stephens*

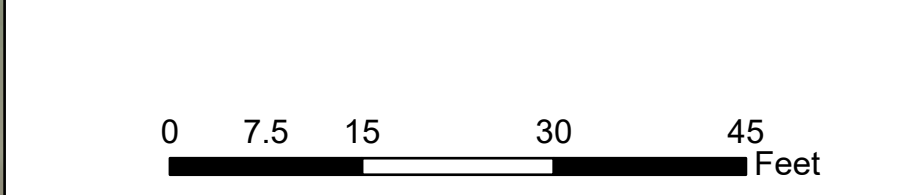
**BE** BANKSON ENGINEERS, INC.  
CONSULTING ENGINEERS  
267 BLUE RUN ROAD SUITE 200  
CHESWICK, PA 15024 (412) 767-6100



LOCATION PLAN  
0 2000 4000  
SCALE IN FEET



Document Path: N:\GIS\ProjectFiles\Union Township, Washington County 4801Veterans Park Sidewalk\MD 2026\VeteransParkPlayground\DA\VeteransParkPlayground\DA.aprx  
 Coordinate System: NAD 1983 StatePlane Pennsylvania South FIPS 3702 Feet / Projection: Lambert Conformal Conic /



**UNION TOWNSHIP**  
 WASHINGTON COUNTY PENNSYLVANIA  
**UNION PARK IMPROVEMENTS PROJECT**  
 PROJECT NO. CD 24-18  
 EXISTING CONDITIONS

**PENNSYLVANIA ONE CALL SYSTEM, INC. SERIAL NO. 20261751613**  
 CONTRACTOR SHALL NOTIFY THE ONE CALL SYSTEM 3-10 DAYS PRIOR TO EXCAVATION AT 1-800-242-1776

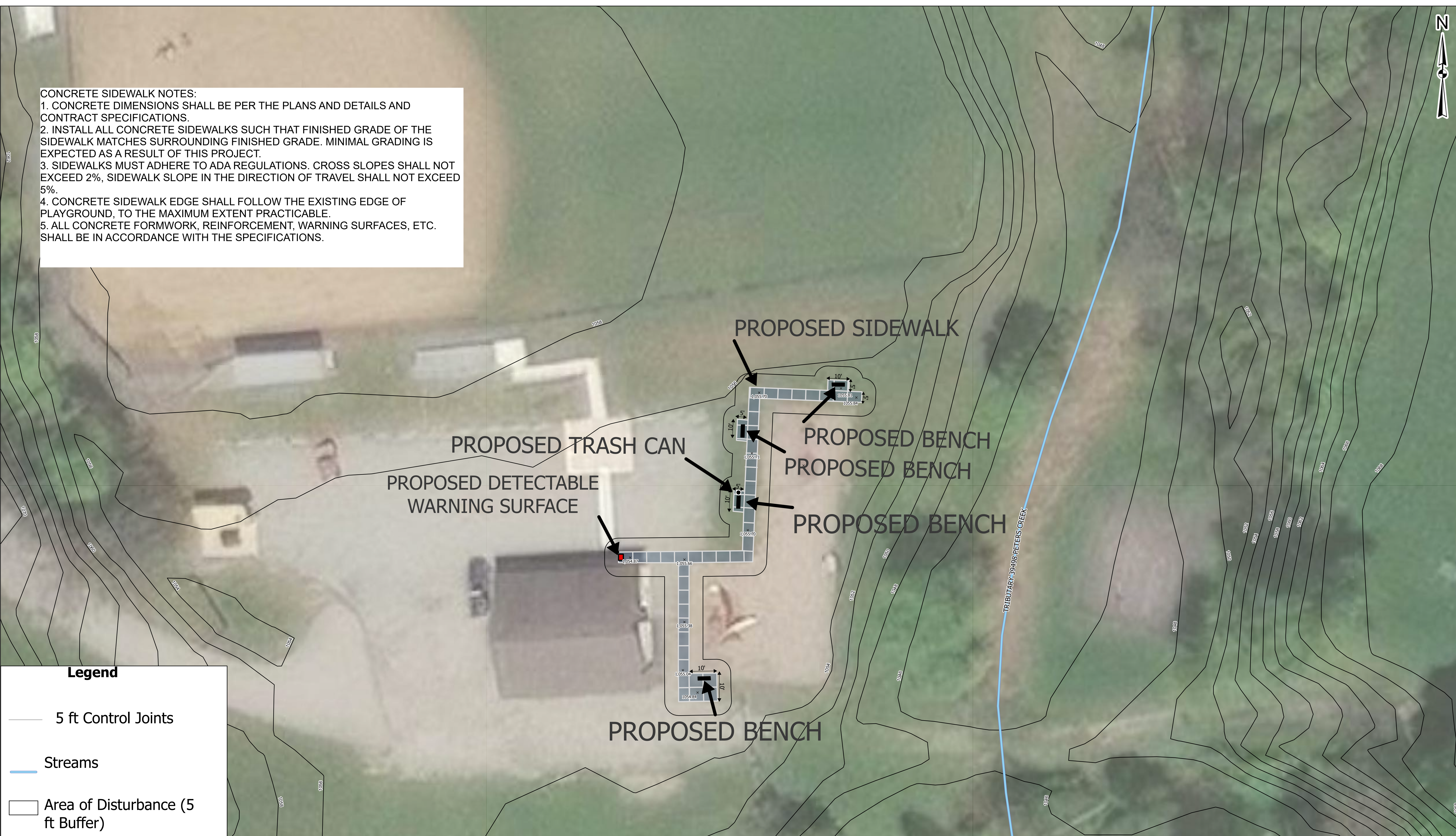
This document, and the ideas and designs incorporated herein, as an instrument of professional service, is the property of Bankson Engineers, Inc., and is not to be used, in whole or in part, for any other project without the written authorization of Bankson Engineers, Inc.

**BE BANKSON ENGINEERS, INC.**  
 CONSULTING ENGINEERS  
 CHESWICK, PA 15024

SCALE AS SHOWN	DRAWN BY G.E.H.	SHEETS IN SET 5
DATE JUN. 2026	APPROVED BY T.J.S.	DRAWING NUMBER 1-439-22-C101

**CONCRETE SIDEWALK NOTES:**

1. CONCRETE DIMENSIONS SHALL BE PER THE PLANS AND DETAILS AND CONTRACT SPECIFICATIONS.
2. INSTALL ALL CONCRETE SIDEWALKS SUCH THAT FINISHED GRADE OF THE SIDEWALK MATCHES SURROUNDING FINISHED GRADE. MINIMAL GRADING IS EXPECTED AS A RESULT OF THIS PROJECT.
3. SIDEWALKS MUST ADHERE TO ADA REGULATIONS. CROSS SLOPES SHALL NOT EXCEED 2%, SIDEWALK SLOPE IN THE DIRECTION OF TRAVEL SHALL NOT EXCEED 5%.
4. CONCRETE SIDEWALK EDGE SHALL FOLLOW THE EXISTING EDGE OF PLAYGROUND, TO THE MAXIMUM EXTENT PRACTICABLE.
5. ALL CONCRETE FORMWORK, REINFORCEMENT, WARNING SURFACES, ETC. SHALL BE IN ACCORDANCE WITH THE SPECIFICATIONS.



**Legend**

- 5 ft Control Joints
- Streams
- Area of Disturbance (5 ft Buffer)
- Proposed Detectable Warning Surface
- Proposed Walkway
- Proposed Bench
- Proposed Trash Can

SPOT ELEVATION (IN FEET) WAS GATHERED FROM A DIGITAL ELEVATION MODEL OF WASHINGTON COUNTY.

PROPOSED SIDEWALK

PROPOSED TRASH CAN

PROPOSED DETECTABLE WARNING SURFACE

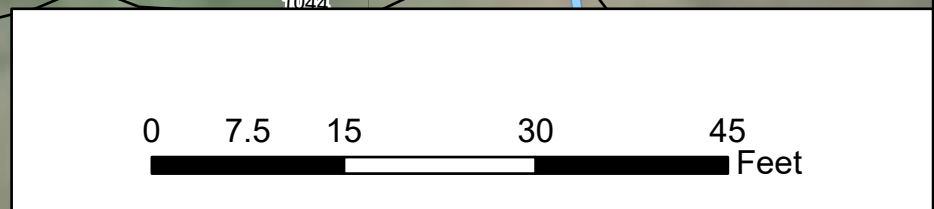
PROPOSED BENCH

PROPOSED BENCH

PROPOSED BENCH

PROPOSED BENCH

TRIBUTARY 39498 PETERS CREEK



UNION TOWNSHIP  
WASHINGTON COUNTY PENNSYLVANIA  
UNION PARK IMPROVEMENTS PROJECT  
PROJECT NO. CD 24-18  
SITE PLAN

PENNSYLVANIA ONE CALL SYSTEM, INC. SERIAL NO. 20261751613  
CONTRACTOR SHALL NOTIFY THE ONE CALL SYSTEM 3-10 DAYS PRIOR TO EXCAVATION AT 1-800-242-1776

This document, and the ideas and designs incorporated herein, as an instrument of professional service, is the property of Bankson Engineers, Inc., and is not to be used, in whole or in part, for any other project without the written authorization of Bankson Engineers, Inc.

**BANKSON ENGINEERS, INC.**  
CONSULTING ENGINEERS  
CHESWICK, PA 15024

SCALE AS SHOWN	DRAWN BY G.E.H.	SHEETS IN SET 5
DATE JUN. 2026	APPROVED BY T.J.S.	DRAWING NUMBER 1-439-22-C102

Coordinate System: NAD 1983 StatePlane Pennsylvania South FIPS 3702 Feet / Projection: Lambert Conformal Conic /

BASEBALL FIELD

DUGOUT

BLEACHERS

RAMP

PROPOSED SIDEWALK

PAVERS

PARKING PAD

PROPOSED BENCH (TYPICAL)

PROPOSED DETECTABLE WARNING SURFACE

PROPOSED TRASH CAN

DUMPSTER PAD

GRAVEL LOT

CONCRETE WASHOUT

PLAYGROUND

EXISTING PAVILION

DRIVEWAY

**Legend**

— 5 ft Control Joints

— Streams

□ Area of Disturbance (5 ft Buffer)

■ Proposed Detectable Warning Surface

▬ Proposed Walkway

▬ Proposed Bench

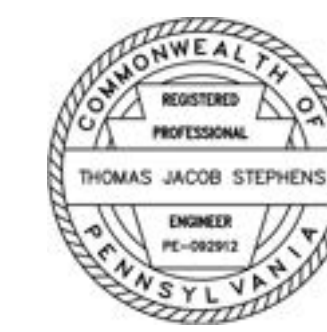
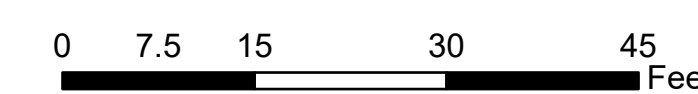
● Proposed Trash Can

SPOT ELEVATION (IN FEET) WAS GATHERED FROM A DIGITAL ELEVATION MODEL OF WASHINGTON COUNTY.

PENNSYLVANIA ONE CALL SYSTEM, INC. SERIAL NO. 20261751613

CONTRACTOR SHALL NOTIFY THE ONE CALL SYSTEM 3-10 DAYS PRIOR TO EXCAVATION AT 1-800-242-1776

This document, and the ideas and designs incorporated herein, as an instrument of professional service, is the property of Bankson Engineers, Inc., and is not to be used, in whole or in part, for any other project without the written authorization of Bankson Engineers, Inc.



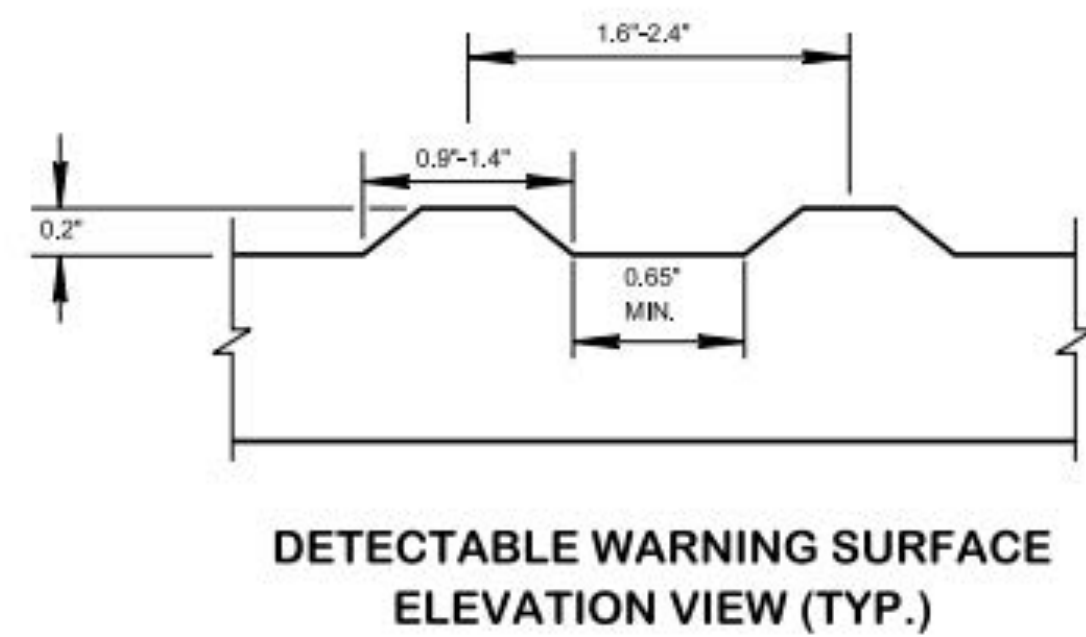
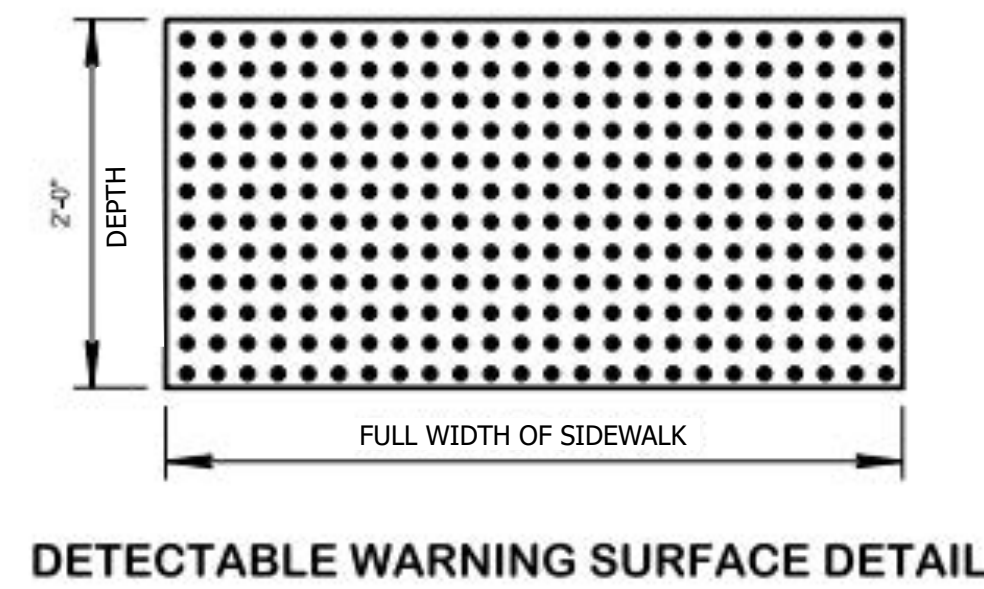
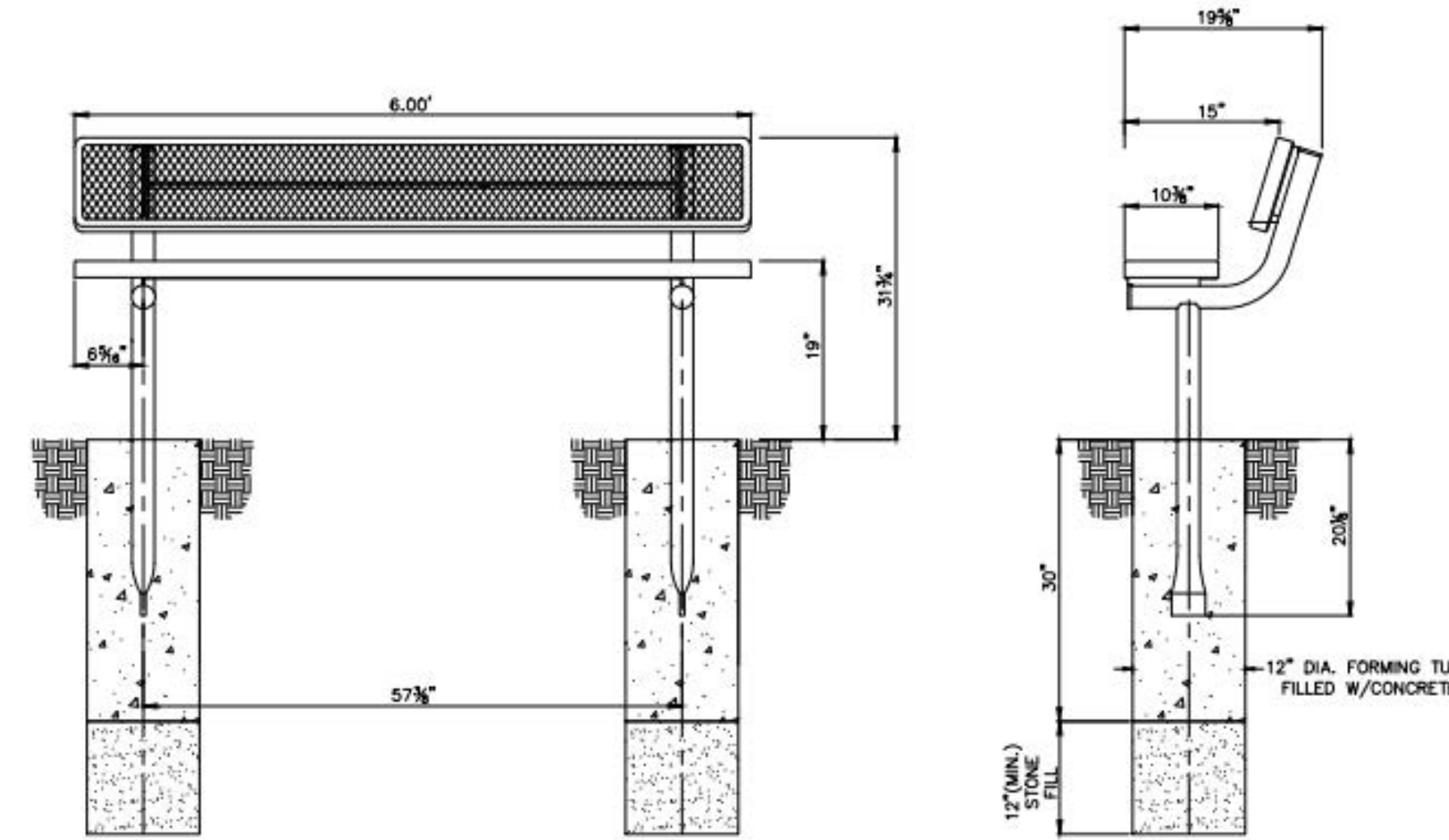
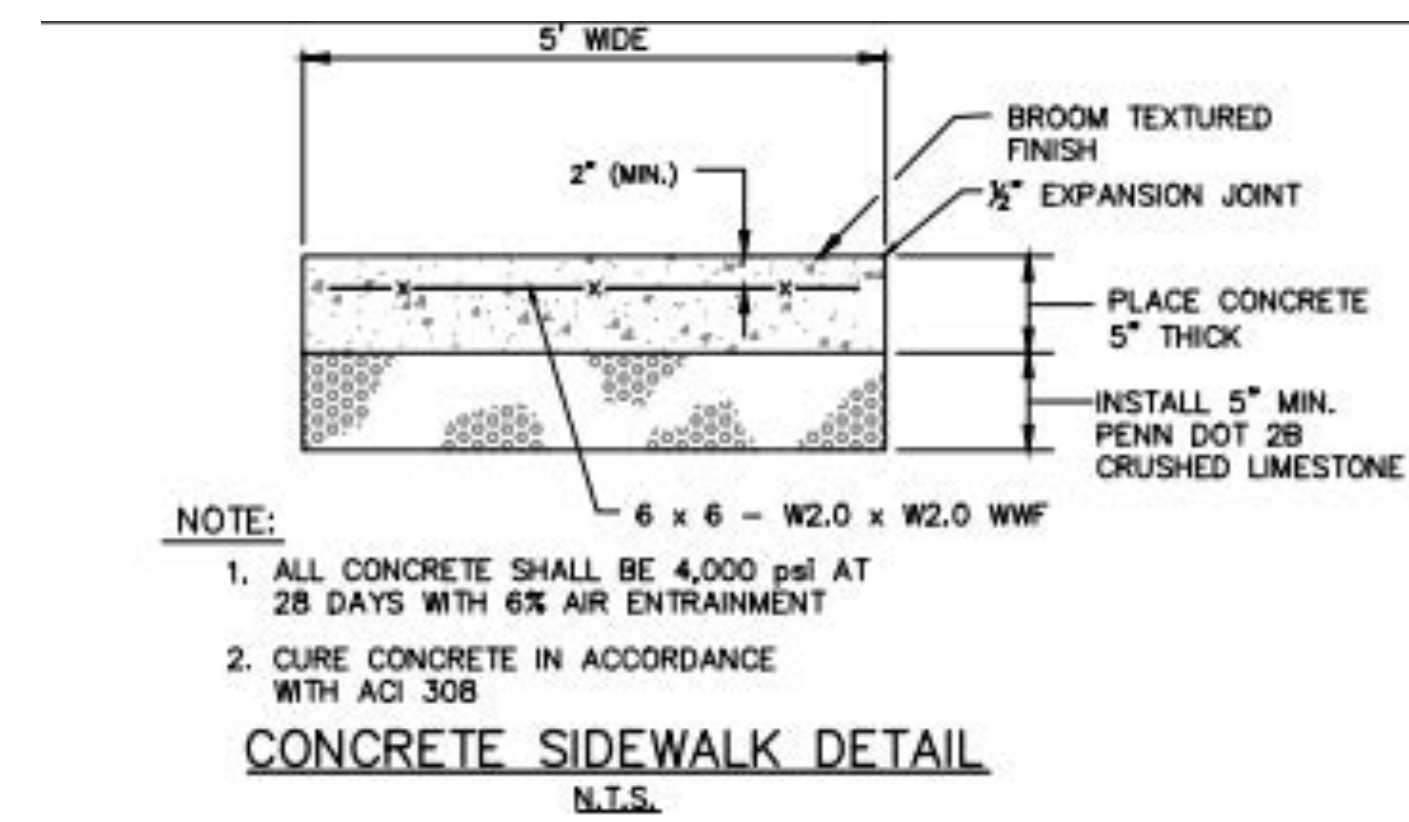
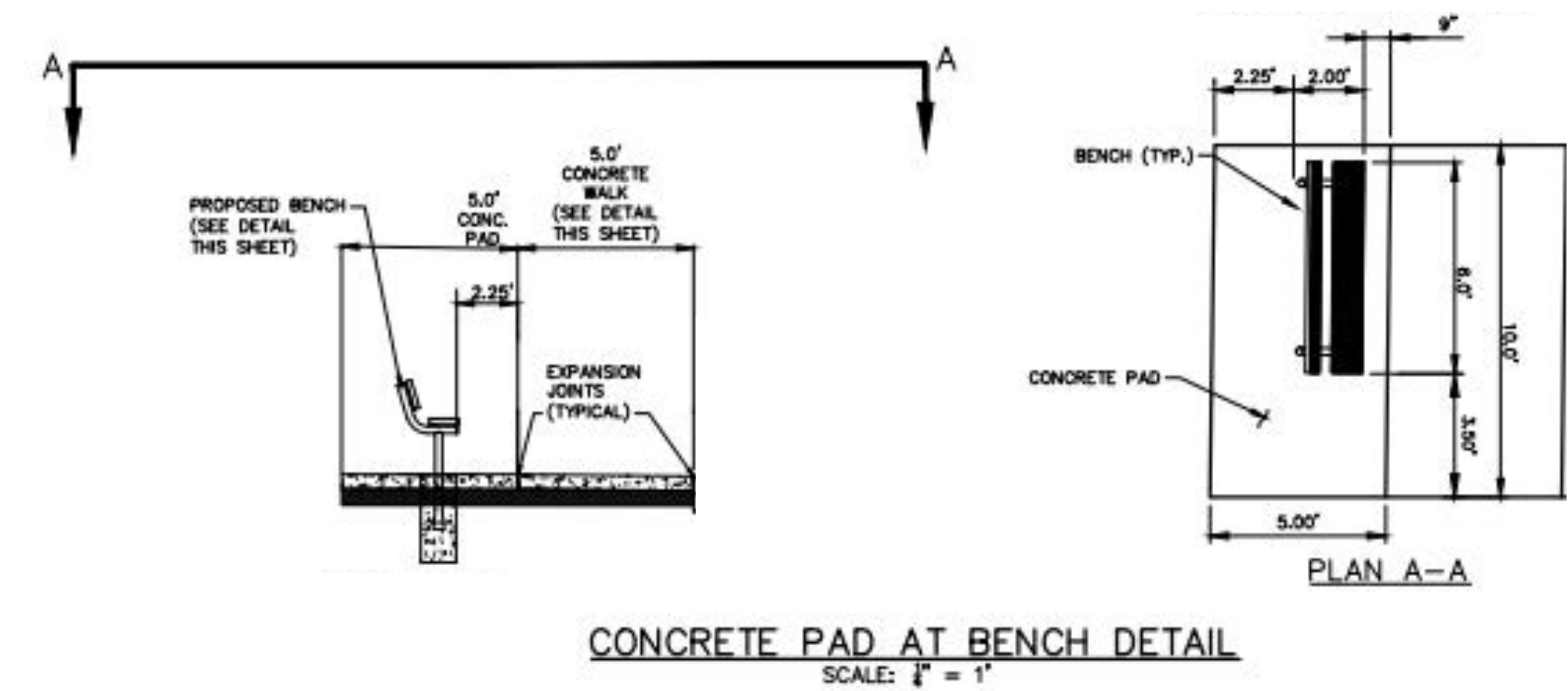
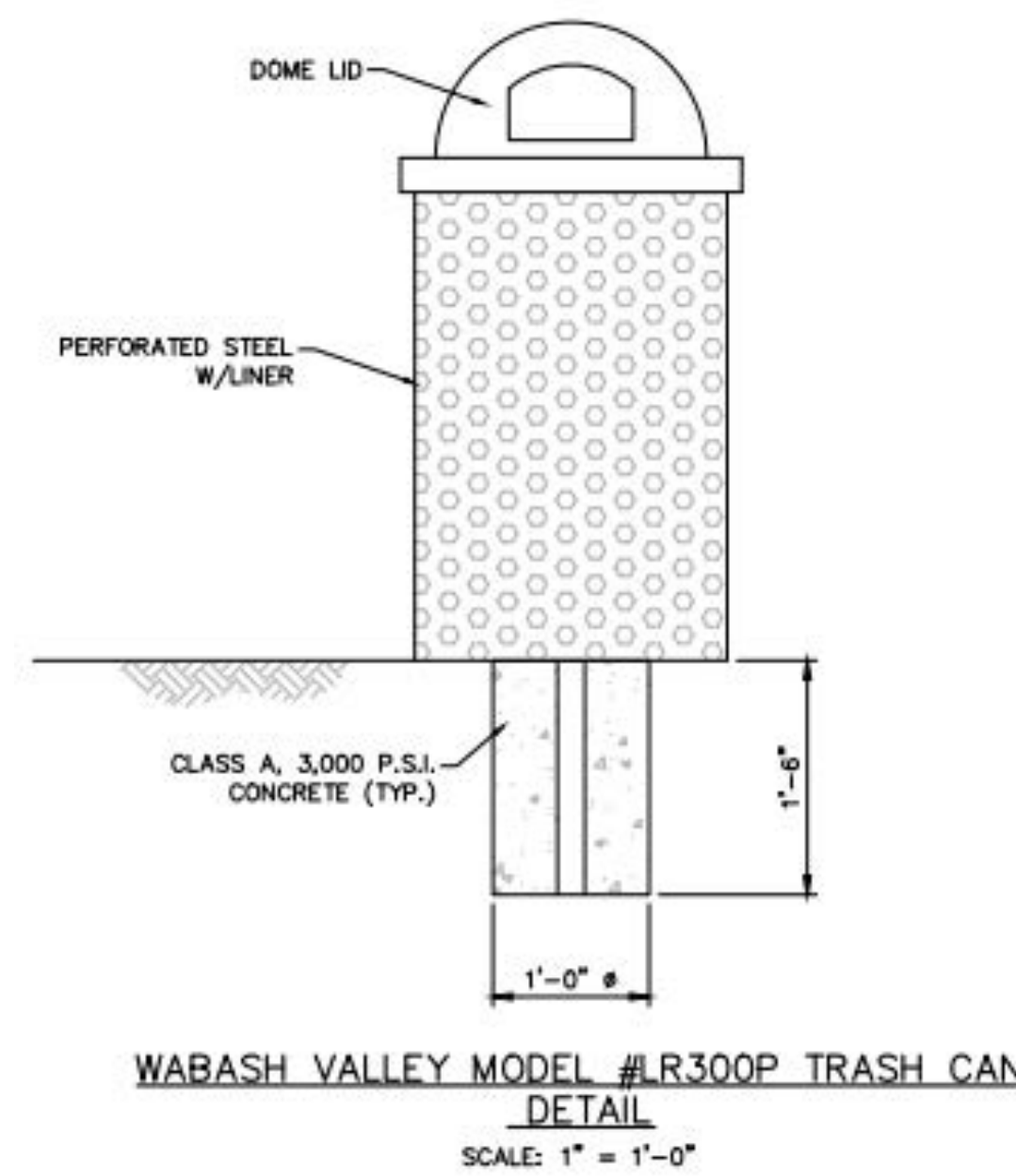
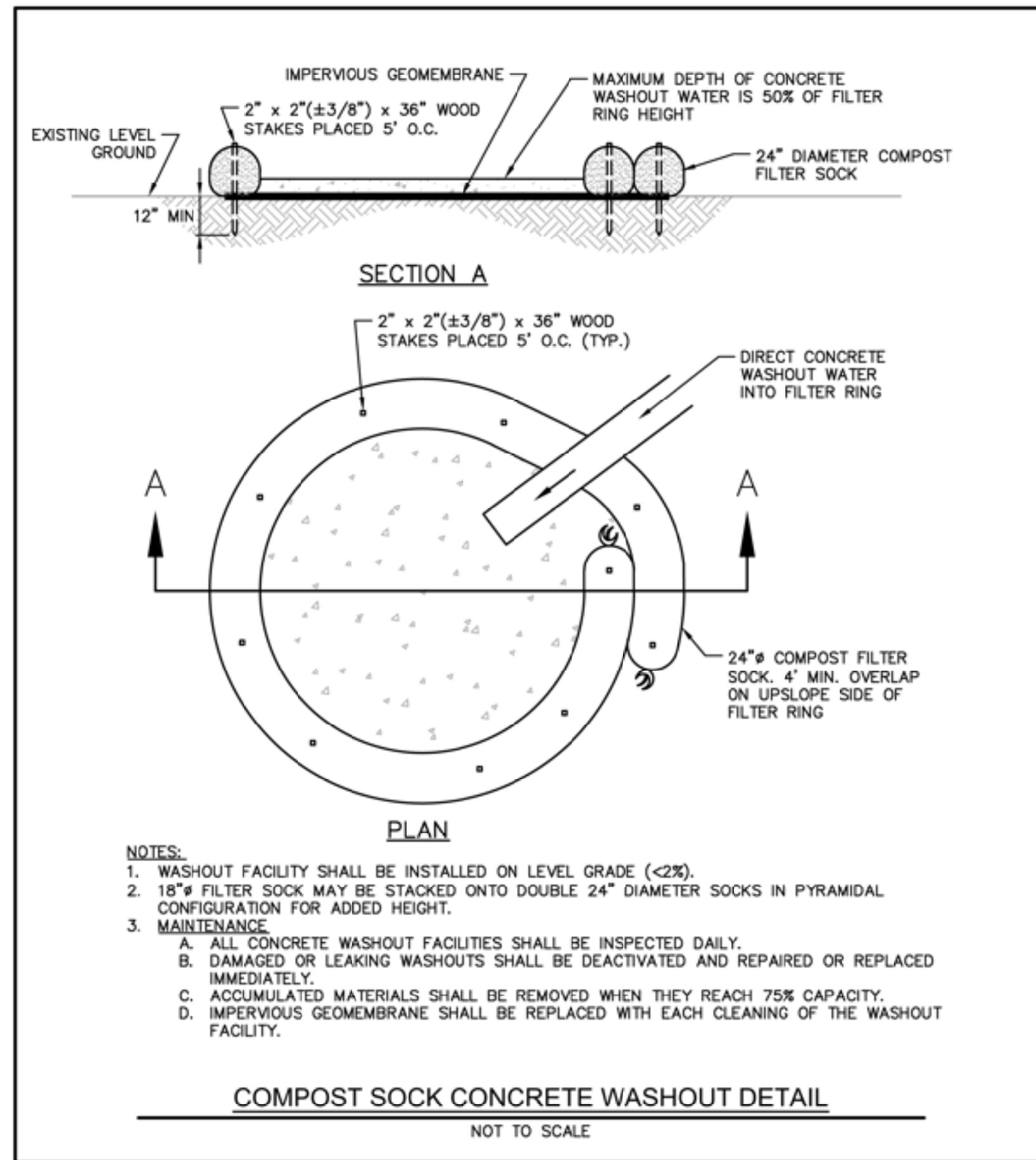
UNION TOWNSHIP  
WASHINGTON COUNTY PENNSYLVANIA  
UNION PARK IMPROVEMENTS PROJECT  
PROJECT NO. CD 24-18  
SOIL EROSION AND SEDIMENTATION CONTROL PLAN

**BE** BANKSON ENGINEERS, INC.  
CONSULTING ENGINEERS  
CHESWICK, PA 15024

SCALE AS SHOWN  
DATE JUN. 2026  
DRAWN BY G.E.H.  
APPROVED BY T.J.S.  
SHEETS IN SET 5  
DRAWING NUMBER 1-439-22-CE101

Document Path: N:\GIS - Project Files\Union Township - Washington County - 2024\Union Park Playgrounds\PA Playgrounds\PA Playgrounds\CD 24-18

Coordinate System: NAD 1983 StatePlane Pennsylvania South FIPS 3702 Feet / Projection: Lambert Conformal Conic /



**TABLE 4.1**  
**COMPOST SOCK FABRIC MINIMUM SPECIFICATIONS**

MATERIAL TYPE	3 mil HDPE	5 mil HDPE	5 mil HDPE	MULTI-FILAMENT POLYPROPYLENE (MPP)	HEAVY DUTY MULTI-FILAMENT POLYPROPYLENE (HMPP)
MATERIAL CHARACTERISTICS	PHOTO-DEGRADABLE	PHOTO-DEGRADABLE	BIO-DEGRADABLE	PHOTO-DEGRADABLE	PHOTO-DEGRADABLE
SOCK DIAMETERS	12" 18"	12" 18" 24"	18" 24" 32"	12" 18" 24" 32"	12" 18"
MESH OPENING	3/8"	3/8"	3/8"	3/8"	1/8"
TENSILE STRENGTH		26 PSI	26 PSI	44 PSI	202 PSI
ULTRAVIOLET STABILITY % ORIGINAL STRENGTH (ASTM G-155)	23% AT 1000 HR.	23% AT 1000 HR.		100% AT 1000 HR.	100% AT 1000 HR.
MINIMUM FUNCTIONAL LONGEVITY	6 MONTHS	9 MONTHS	6 MONTHS	1 YEAR	2 YEARS

**TABLE 4.2**  
**COMPOST STANDARDS**

ORGANIC MATTER CONTENT	80% - 100% (DRY WEIGHT BASIS)
ORGANIC PORION	FIBROUS AND ELONGATED
pH	5.5 - 8.0
MOISTURE CONTENT	35% - 55%
PARTICLE SIZE	98% PASS THROUGH 1" SCREEN
SOLUBLE SALT CONCENTRATION	5.0 ds/m (mmhos/cm) MAXIMUM

**NOTES:**

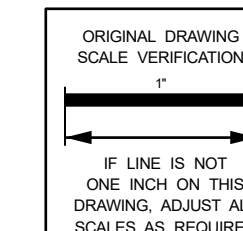
1. SOCK FABRIC SHALL MEET STANDARDS OF TABLE 4.1 OF THE PA DEP EROSION CONTROL MANUAL. COMPOST SHALL MEET THE STANDARDS OF TABLE 4.2 OF THE PA DEP EROSION CONTROL MANUAL.
2. COMPOST FILTER SOCK SHALL BE PLACED AT EXISTING LEVEL GRADE. BOTH ENDS OF THE BARRIER SHALL BE EXTENDED AT LEAST 8 FEET UP SLOPE AT 45 DEGREES TO THE MAIN BARRIER ALIGNMENT. MAXIMUM SLOPE LENGTH ABOVE ANY BARRIER SHALL NOT EXCEED THAT SPECIFIED FOR THE SIZE OF THE SOCK AND THE SLOPE OF ITS TRIBUTARY AREA.
3. TRAFFIC SHALL NOT BE PERMITTED TO CROSS COMPOST FILTER SOCKS.
4. ACCUMULATED SEDIMENT SHALL BE REMOVED WHEN IT REACHES 1/2 THE ABOVE GROUND HEIGHT OF THE BARRIER AND DISPOSED IN THE MANNER DESCRIBED ELSEWHERE IN THE PLAN.
5. COMPOST FILTER SOCKS SHALL BE INSPECTED WEEKLY AND AFTER EACH RUNOFF EVENT. DAMAGED SOCKS SHALL BE REPAIRED ACCORDING TO MANUFACTURER'S SPECIFICATIONS OR REPLACED WITHIN 24 HOURS OF INSPECTION.
6. BIODEGRADABLE COMPOST FILTER SOCKS SHALL BE REPLACED AFTER 6 MONTHS. PHOTODEGRADABLE SOCKS AFTER 1 YEAR. POLYPROPYLENE SOCKS SHALL BE REPLACED ACCORDING TO MANUFACTURER'S RECOMMENDATIONS.
7. UPON STABILIZATION OF THE AREA TRIBUTARY TO THE SOCK, STAKES SHALL BE REMOVED. THE SOCK MAY BE LEFT IN PLACE AND VEGETATED OR REMOVED IN THE LATTER CASE, THE MESH SHALL BE CUT OPEN AND THE MESH SPREAD AS A SOIL SUPPLEMENT.

**PENNSYLVANIA ONE CALL SYSTEM, INC. SERIAL NO.** 20261751613  
CONTRACTOR SHALL NOTIFY THE ONE CALL SYSTEM 3-10 DAYS PRIOR TO EXCAVATION AT 1-800-242-1776

This document, and the ideas and designs incorporated herein, as an instrument of professional service, is the property of Bankson Engineers, Inc., and is not to be used, in whole or in part, for any other project without the written authorization of Bankson Engineers, Inc.



**UNION TOWNSHIP**  
WASHINGTON COUNTY PENNSYLVANIA  
**UNION PARK IMPROVEMENTS PROJECT**  
PROJECT NO. CD 24-18  
SITE DETAILS & SOIL AND SEDIMENT CONTROL PLAN DETAILS



**BANKSON ENGINEERS, INC.**  
CONSULTING ENGINEERS  
CHESWICK, PA 15024

SCALE	DRAWN BY	SHEETS IN SET
AS SHOWN	G.E.H.	5
DATE	APPROVED BY	DRAWING NUMBER
JUN. 2026	T.J.S.	1-439-22-C501